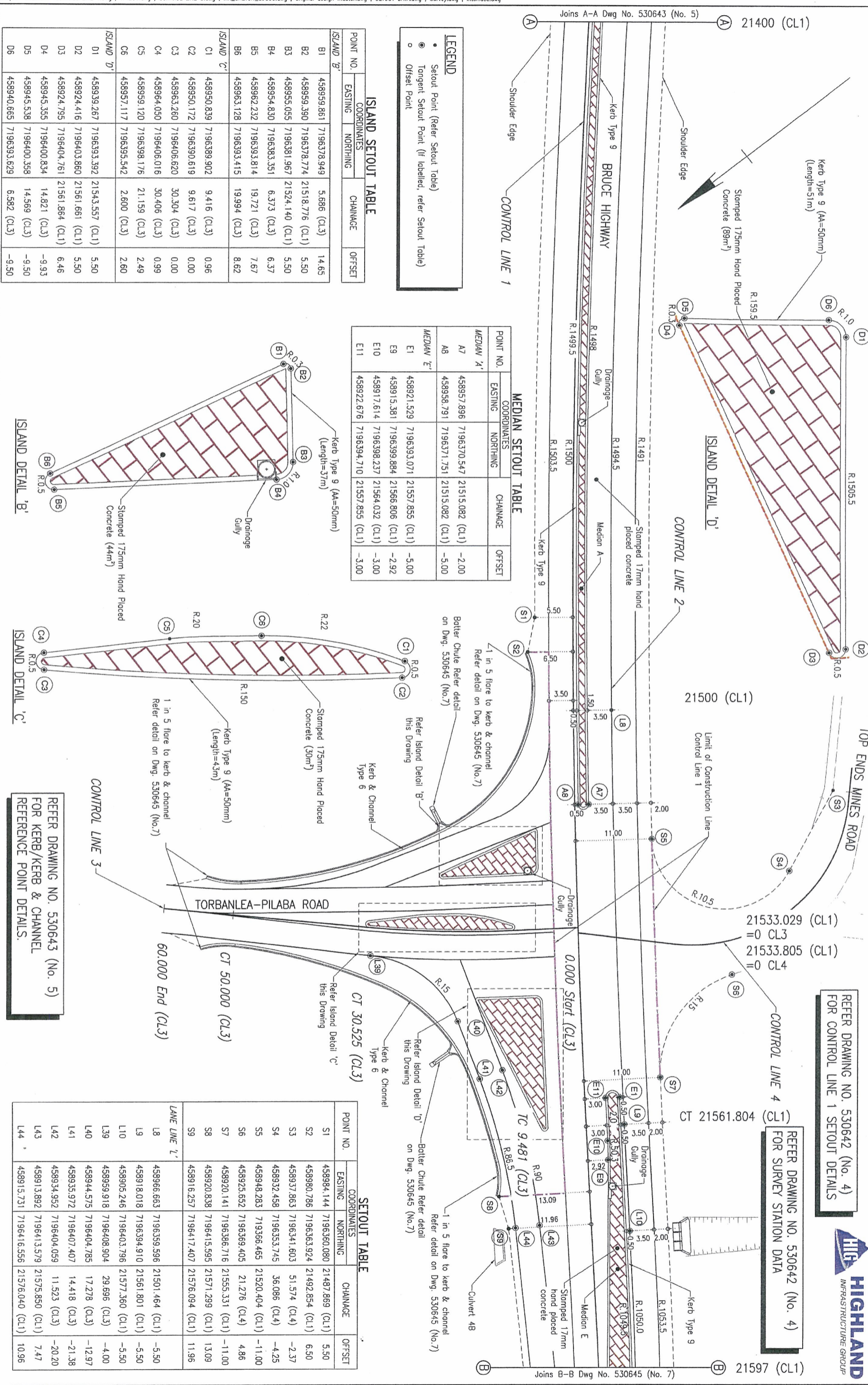


Joins A-A Dwg No. 530643 (No. 5)

Joins B-B Dwg No. 530645 (No. 7)



**LEGEND**

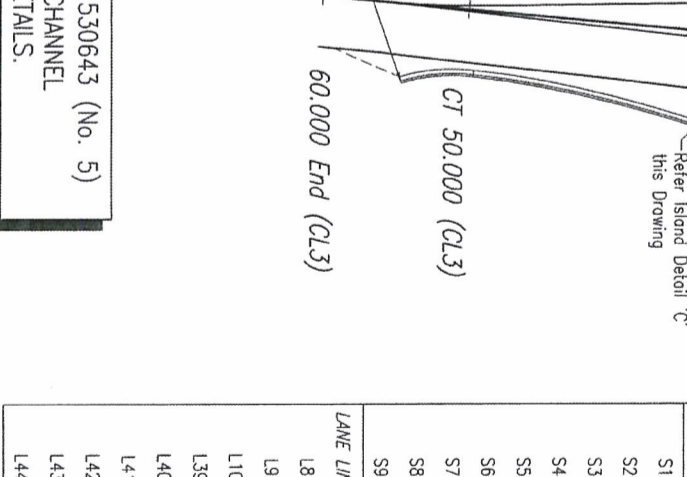
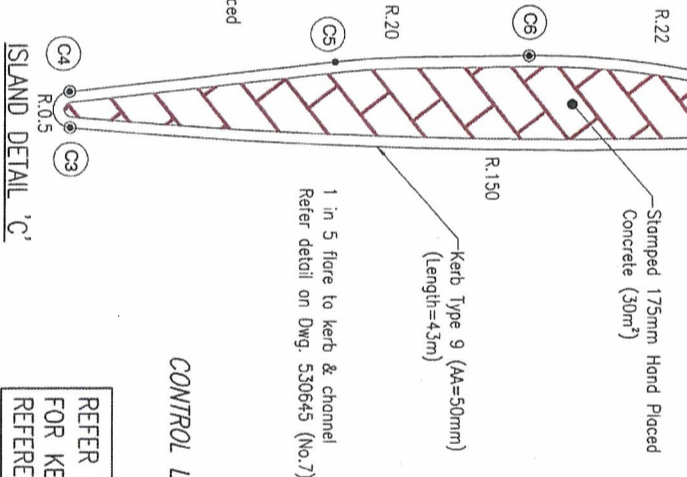
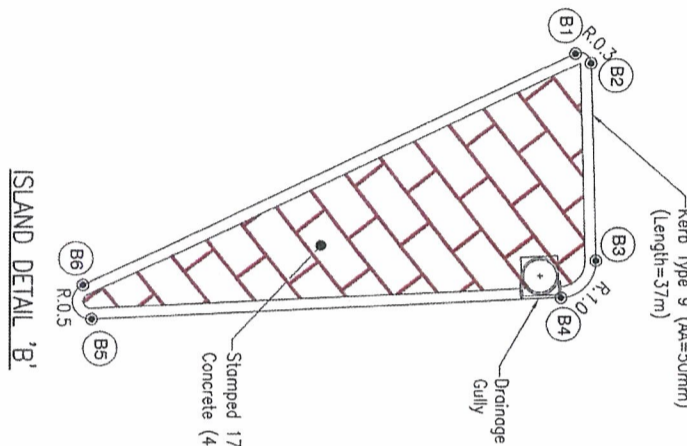
- Setout Point (Refer Setout Table)
- Tangent Setout Point (If labelled, refer Setout Table)
- Offset Point

**ISLAND SETOUT TABLE**

POINT NO.	COORDINATES		CHAINAGE	OFFSET
	EASTING	NORTHING		
<b>ISLAND 'B'</b>				
B1	458959.861	7196378.949	5.686 (CL3)	14.65
B2	458959.390	7196378.774	21518.776 (CL1)	5.50
B3	458955.055	7196381.967	21524.140 (CL1)	5.50
B4	458954.830	7196383.351	6.373 (CL3)	6.37
B5	458962.232	7196393.814	19.721 (CL3)	7.67
B6	458963.128	7196393.415	19.994 (CL3)	8.62
<b>ISLAND 'C'</b>				
C1	458950.839	7196389.902	9.416 (CL3)	0.96
C2	458950.172	7196390.619	9.617 (CL3)	0.00
C3	458963.260	7196406.620	30.304 (CL3)	0.00
C4	458964.050	7196406.016	30.406 (CL3)	0.99
C5	458959.120	7196398.176	21.159 (CL3)	2.49
C6	458957.117	7196395.542	2.600 (CL3)	2.60
<b>ISLAND 'D'</b>				
D1	458939.267	7196393.392	21543.557 (CL1)	5.50
D2	458924.416	7196403.860	21561.661 (CL1)	5.50
D3	458924.795	7196404.761	21561.864 (CL1)	6.46
D4	458945.355	7196400.834	14.821 (CL3)	-9.93
D5	458945.538	7196400.358	14.569 (CL3)	-9.50
D6	458940.665	7196393.629	6.582 (CL3)	-9.50

**MEDIAN SETOUT TABLE**

POINT NO.	COORDINATES		CHAINAGE	OFFSET
	EASTING	NORTHING		
<b>MEDIAN 'A'</b>				
A7	458957.896	7196370.547	21515.082 (CL1)	-2.00
A8	458958.791	7196371.751	21515.082 (CL1)	-5.00
<b>MEDIAN 'E'</b>				
E1	458921.529	7196393.071	21557.855 (CL1)	-5.00
E3	458915.381	7196399.884	21566.806 (CL1)	-2.92
E10	458917.614	7196398.237	21564.032 (CL1)	-3.00
E11	458922.676	7196394.710	21557.855 (CL1)	-3.00



**SETOUT TABLE**

POINT NO.	COORDINATES		CHAINAGE	OFFSET
	EASTING	NORTHING		
S1	458984.144	7196360.080	21487.869 (CL1)	5.50
S2	458980.786	7196363.924	21492.854 (CL1)	6.50
S3	458937.863	7196341.603	51.574 (CL4)	-2.37
S4	458932.458	7196353.745	36.086 (CL4)	-4.25
S5	458948.283	7193366.455	21520.404 (CL1)	-11.00
S6	458925.652	7196369.405	21.276 (CL4)	4.86
S7	458920.141	7196386.716	21555.331 (CL1)	-11.00
S8	458920.838	7196415.595	21571.299 (CL1)	13.09
S9	458916.257	7196417.407	21576.094 (CL1)	11.96
<b>LANE LINE 'L'</b>				
L8	458966.663	7196359.596	21501.464 (CL1)	-5.50
L9	458918.018	7196394.910	21561.801 (CL1)	-5.50
L10	458905.246	7196403.796	21577.360 (CL1)	-5.50
L39	458959.918	7196408.904	29.696 (CL3)	-4.00
L40	458944.575	7196404.785	17.278 (CL3)	-12.97
L41	458935.972	7196407.407	14.418 (CL3)	-21.38
L42	458934.952	7196404.059	11.523 (CL3)	-20.20
L43	458913.892	7196413.579	21575.850 (CL1)	7.47
L44	458915.731	7196416.556	21576.040 (CL1)	10.96

REFER DRAWING NO. 530643 (No. 5)  
FOR KERB/KERB & CHANNEL  
REFERENCE POINT DETAILS.

REFER DRAWING NO. 530642 (No. 4)  
FOR SURVEY STATION DATA

REFER DRAWING NO. 530642 (No. 4)  
FOR CONTROL LINE 1 SETOUT DETAILS



FRASER COAST REGIONAL COUNCIL  
BRUCE HIGHWAY (MARYBOROUGH - GIN GIN)  
CTL CHGE 21260 - 21780  
Reference Points  
From start to end of job  
From end to following RP  
Through Change from Maryborough 21.26 - 21.78km

SETTING OUT DETAILS  
CONTROL LINE 1 (21400 - 21597)  
SHEET 2 OF 4

Queensland Government  
Transport and Main Roads  
Job No. 228/100/1  
Contract No. WBD-873  
Drawing No. 530644  
Series Number 6 of 32

**Revisions/Descriptions**

Ref	Certification	Date	Microfiled
A			
B			
C			
D			
E			

**Associated Job Nos**

Survey	DATA
MR89390	MR89390

**Dimensions shown in meters**

Scale	0	1	2	3	4m
PLAN	0	1	2	3	4m

**Checked** P.Zimmerle  
**Designed** R.Leach  
**Verified** T.Collagher  
**Design Reviews (PEO)**

**ENGINEERING CERTIFICATION (REGD)**

NAME	NO.	DATE	For scheme
CAMERON CURRIE	6660	3/2/2011	status refer